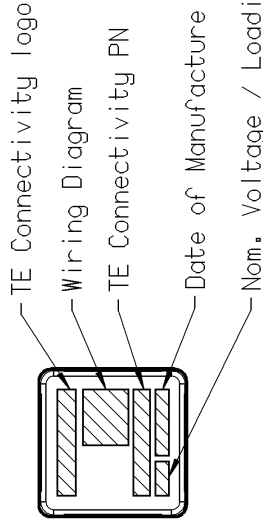
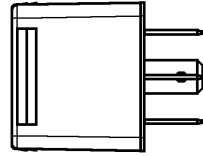
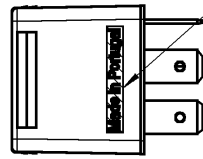
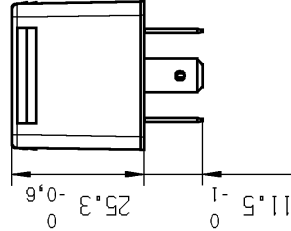
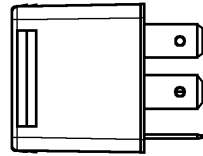
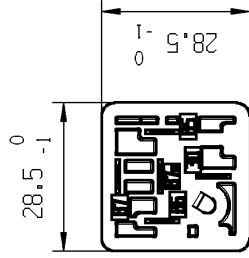
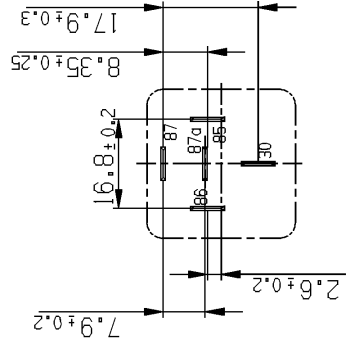


BLADE TERMINALS 85,86 DIN 46 244-A6,3-0,8 CuZn TIN PLATED  
 BLADE TERMINALS 30,87,87a DIN 46 244-A6,3-0,8 Cu TIN PLATED

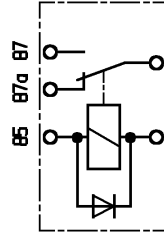
CUT EDGES WITHOUT TIN PLATING ALLOWED



TERMINAL CONFIGURATION



WIRING DIAGRAM



ATTENTION ↑ POLARITY

DEGREE OF PROTECTION ACC. TO IEC529 = DIN 40 050 Teil 9

TERMINALS IP 20  
 HOUSING IP 5K4  
 IN CONNECTION WITH A CONNECTOR HOUSING  
 MOUNTING POSITION: TERMINALS SHALL POINT DOWNWARDS  
 FOR ALL OTHER POSITIONS PROTECTION GROUP IP 20 IS VALID

PART	MATERIAL	COLOUR
HOUSING	PA 66 GF 30±10 [%]	BLACK
BASE PLATE	PA 66 GF 30±10 [%]	NATURE

OBSOLETE BOSCH P/N	TE Connectivity P/N	REV	PART NUMBER	CUSTOMER P/N	CODE NO
0 332 209 204	0-1904025-3		V23234-A0004-X051		
	1-1904025-3				
	2-1904025-3				
	3-1904025-3				
	4-1904025-3				
	5-1904025-3				
	6-1904025-3				
	7-1904025-3				
	8-1904025-3				
	9-1904025-3				

PROPRIETARY  
 THE REPRODUCTION, TRANSMISSION OR USE OF THIS DOCUMENT OR ITS CONTENTS IS NOT PERMITTED WITHOUT EXPRESSED WRITTEN AUTHORITY. OFFENDERS WILL BE LIABLE FOR ALL DAMAGES, ALL RIGHTS, INCLUDING RIGHTS CREATED BY REGISTERED PATENT(S) GRANTED FOR A UTILITY MODEL OR DESIGN, ARE RESERVED.

APPLICABLE SPEC.:

CHANGES TO THIS DRAWING MUST BE DONE ONLY IN CAD

PAPER SIZE  
**A3**

FINISH

DIMENSIONS APPLY PLATING

SCALE **1:1**  
 MATERIAL WEIGHT **Ca. 34g**

PART NAME

**MINI RELAY B  
 CHANGEOVER / 24V**

PART NO.

**V23234-A0004-X051**

CUSTOMER DRAWING

REV.	CHANGE ORDER	DATE	APP.	DATE	APP.	LOCATION	AMR PE EVORA
B	ECO-11-015509	28JUL2011	A.P.	DWIN.	2006-06-05	P. TOMOS	
A5	INITIAL VERSION	2007-10-15	PTom	APP.			
A4	--	2007-02-23	--	REV.			
A3	--	2007-01-15	--				
A2	--	2006-12-04	--				
A1	--	2006-11-06	--				
A	--	2006-08-23	--				



SHT. 1 of 2

Nominal voltage (load and excitation circuit)

24 V

Permissible operating voltage

16...32 V

Permissible ambient temperature

-40...85 ° C

Response voltage (at 20 ° C)

≤ 16 V

Release voltage (at 20 ° C)

3...10.5 V

Response time

≤ 15 ms

Release time

≤ 25 ms

Contact material

Silver Tin Oxide

Changeover contact: Voltage drop in load circuit at 10A

NO contact when new

typical 50 mV; Max. 300mV

NO contact after specified number of switching operations

Max. 300 mV

NC contact when new

typical 50 mV; Max. 300mV

NC contact after specified number of switching operations

Max. 300 mV

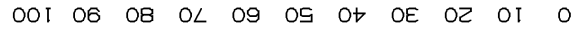
Electrical Endurance

Resistive Load 20A on NO

≥ 250,000 cycles

Resistive Load 10A on NC

≥ 250,000 cycles



PROPRIETARY THE REPRODUCTION, TRANSMISSION OR USE OF THIS DOCUMENT OR ITS CONTENTS IS NOT PERMITTED WITHOUT EXPRESSED WRITTEN AUTHORITY. OFFENDERS WILL BE LIABLE FOR ALL DAMAGES. ALL RIGHTS, INCLUDING RIGHTS CREATED BY REGISTERED PATENT(S) GRANTED FOR A UTILITY MODEL OR DESIGN, ARE RESERVED.				CHANGES TO THIS DRAWING MUST BE DONE ONLY IN CAD				PAPER SIZE <b>A3</b>	
APPLICABLE SPEC.:				FINISH				DIMENSIONS APPLY PLATING	
TOLERANCE UNLESS SPECIFIED OTHERWISE				DIMENSIONS IN MM				SCALE MATERIAL <b>Ca. 34g</b>	
DATE		NAME		PART NAME				SHT.	
28JUL2011		A.P.		2006-06-05				<b>MINI RELAY B</b>	
2007-10-15		P. Tomos		2006-06-05				<b>CHANGEOVER / 24V</b>	
2007-02-23		REV.		2007-02-23				PART NO.	
2007-01-15		LOCATION		AMR PE EVORA				<b>V23234-A0004-X051</b>	
2006-12-04		DATE		2006-11-06				CUSTOMER DRAWING	
2006-11-06		DATE		2006-08-23				of 2	
2006-08-23		APP.		APP.				B	