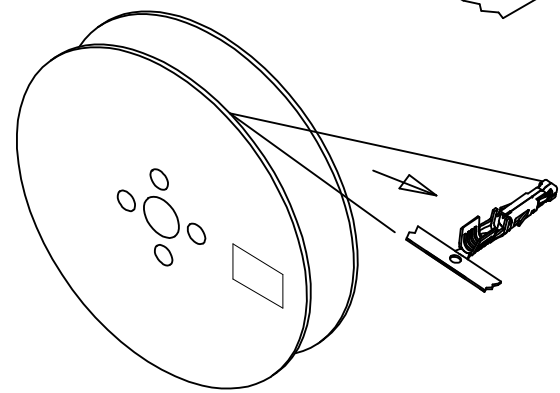
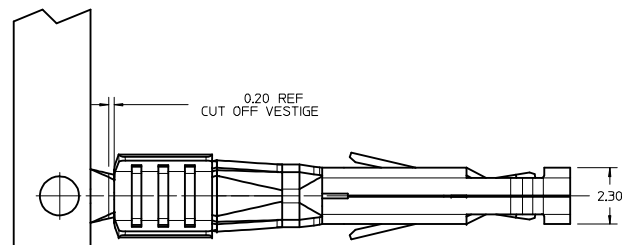
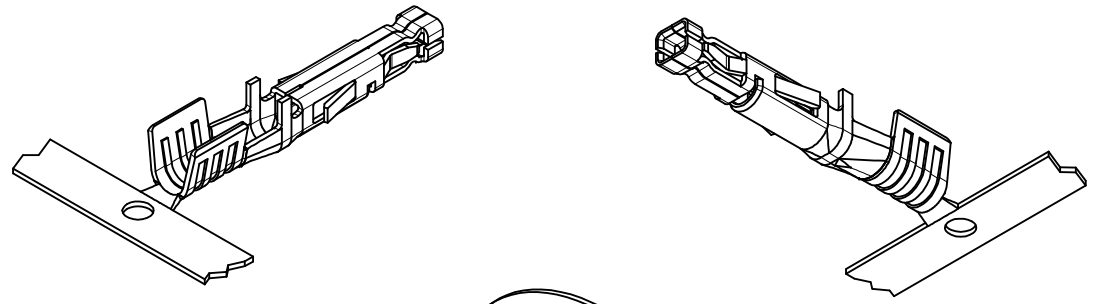
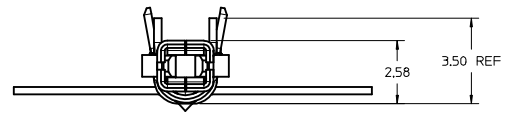
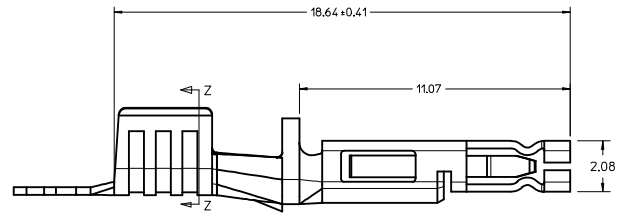


ITEM NO.	WIRE GAUGE	PLATING
172063-0311	14/16	15 GOLD
172063-0312	12	15 GOLD
172063-1311	14/16	30 GOLD
172063-1312	12	30 GOLD
X 76823-0321	14/16	TIN
X 76823-0322	12	TIN

X = NOT RELEASED

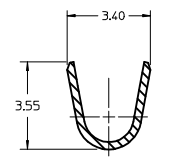


FINISH PART UNWIND DIRECTION

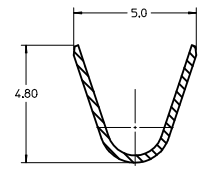


NOTES:

- MATERIAL: HIGH CONDUCTIVITY COPPER ALLOY
- FINISH:
 (15 GOLD) 0.38 MICROMETER / (15 MICROINCH) MINIMUM SELECT GOLD AND 2.54 MICROMETER / (100 MICROINCH) MINIMUM SELECT MATTE TIN OVER
 (30 GOLD) 0.76 MICROMETER / (30 MICROINCH) MINIMUM SELECT GOLD AND 2.54 MICROMETER / (100 MICROINCH) MINIMUM SELECT MATTE TIN OVER
 (15 GOLD) 0.38 MICROMETER / (15 MICROINCH) MINIMUM NICKEL
 (30 GOLD) 0.76 MICROMETER / (30 MICROINCH) MINIMUM NICKEL OVERALL.
 (15 GOLD) 0.38 MICROMETER / (15 MICROINCH) MINIMUM NICKEL AND 2.54 MICROMETER / (100 MICROINCH) MINIMUM SELECT GOLD AND 2.54 MICROMETER / (100 MICROINCH) MINIMUM SELECT MATTE TIN OVER
 (30 GOLD) 0.76 MICROMETER / (30 MICROINCH) MINIMUM NICKEL OVERALL AND 2.54 MICROMETER / (100 MICROINCH) MINIMUM SELECT MATTE TIN OVER
 (15 GOLD) 0.38 MICROMETER / (15 MICROINCH) MINIMUM NICKEL OVERALL.
- PRODUCT SPECIFICATION: PS-76823-100
- PACKAGING PER PK-76823-001.
- TERMINAL FOR USE WITH 170001 & 171692 SERIES RECEPTACLES.
- WHEN TERMINALS ARE INSTALLED IN THE HOUSING THE WIRES ARE TO BE DRESSED IN SUCH A MANNER TO ALLOW THE TERMINALS TO FLOAT FREELY IN THE POCKET.
- THIS TERMINAL IS DESIGNED FOR SINGLE WIRE CRIMPING.
- PART CONFORMS TO CLASS 'B' REQUIREMENTS OF COSMETIC SPECIFICATION PS-45499-002.



SECTION Z-Z
CONDUCTOR CRIMP 14/16 AWG



SECTION Z-Z
CONDUCTOR CRIMP 12 AWG

ADD 30 GOLD IEC NO: UCP2014-1826 DRAWN BY: DRWNINGWEN CHKD: BELLE APPR: FSW TH DATE: 2013/10/24 DATE: 2013/10/24 DATE: 2013/10/20	QUALITY SYMBOLS	GENERAL TOLERANCES (UNLESS SPECIFIED)	DIMENSION STYLE	SCALE	DESIGN UNITS	THIRD ANGLE PROJECTION
	$\nabla=0$ $\nabla=0$ $\nabla=0$	mm INCH 4 PLACES ± --- ± --- 3 PLACES ± --- ± --- 2 PLACES ± 0.25 ± --- 1 PLACE ± 0.36 ± --- 0 PLACE ± ±	MM ONLY	10:1	METRIC	
	DRAFT WHERE APPLICABLE MUST REMAIN WITHIN DIMENSIONS	DRAWN BY: MKARADIMAS DATE: 2011/10/19 CHECKED BY: DATE:	APPROVED BY: APATEL DATE: 2012/04/03	TITLE: FEMALE CRIMP TERMINAL MEGA-FIT MATERIAL NO.: SEE CHART DOCUMENT NO.: SD-76823-0100	SHEET NO.: 1 OF 1	