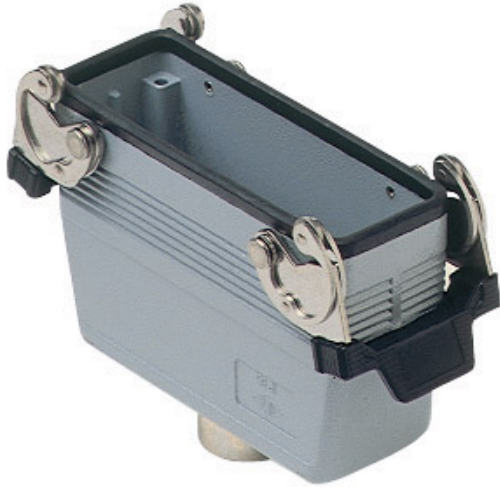




Part number

# CAV 24 G29



## Brief description:

hoods with two levers, size "104.27", top entry, Pg29, metal version, IP66

Product description		Approvals / Standards	
Version	metal version	Quality mark	 (type:4/4X/12),  , EAC
Series	hoods with two levers	Conformity	CQC, CE
Product type	with 2 levers	General ordering information	
Variant	top entry	EAN13 code	8015747009911
Style	high construction	Tariff number	85369095
Family	CLASS enclosures	Packaging Information	
Size	size "104.27"	Packaging length	330,00 mm
Technical data		Packaging height	170,00 mm
Material	metal	Packaging width	230,00 mm
IP degree of protection	IP66 (and IP69 DIN 40050 - 9)	Packaging weight	4,00 kg
Cable entry	Pg29	Packaging volume	12,90 dm <sup>3</sup>
Further technical details		Packaging description	Carton box
Weight	400,00 g	Packaging quantity	10 Pcs
		Packaging EAN code	8015747226110
		Sub-packaging weight	2,00 kg
		Sub-packaging description	Plastic packaging
		Sub-packaging quantity	5 Pcs
		Sub-packaging EAN barcode	8015747009928

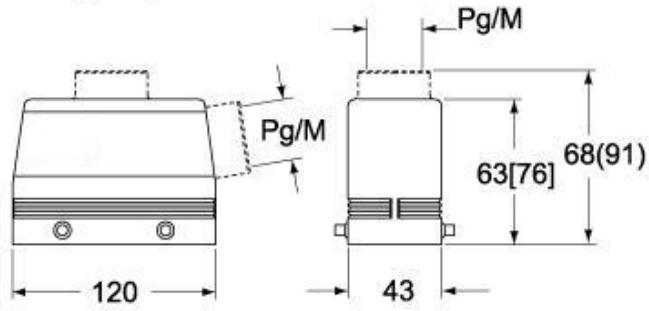
Part number

# CAV 24 G29



Catalogue drawings

**CHO [CAO] CHV (CAV) - MHO [MAO]  
MHV (MAV)**



**CHV G (CAV G) - MHV G (MAV G) - [MFV G]**

