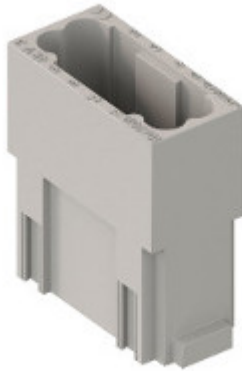


Part number

CX 12 DM



Brief description:

male insert, 12 poles, crimp connection, 10A, 250V, 1 module, modular units MIXO series

Product description	
Model	male insert
Version	Crimp connection
Product type	for male contacts 10A
Family	MIXO series, customizable inserts
Size	1 module
N. of poles	12 poles
Technical data	
Current	10 A (A.C.)
Voltage	250 V
Rated impulse withstand voltage	4kV
Pollution degree	3
Operating temperature range (min, max)	-40°C ... +125°C
Contacts material	Silver plated, gold plated
Mating cycles	≥ 500
IP degree of protection	IP20 without enclosure; IP65/IP66/IP67/IP68 with enclosure
Further technical details	
Characteristics according to EN 61984	10A 250V 4kV 3
Insulation resistance	≥ 10 GΩ
Contact resistance	≤ 3 mΩ
Rated voltage according to UL/CSA	600V
UL 94 flammability rating	V-0
Weight	11,00 g

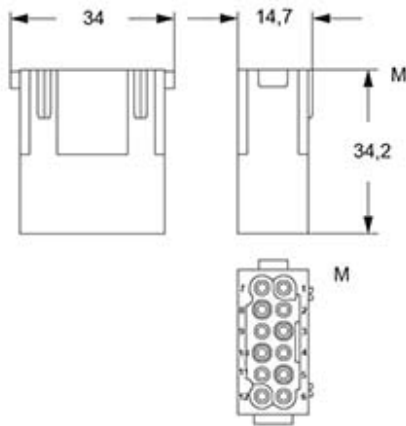
Approvals / Standards	
Reference standard	EN 61984:2009-06
Quality mark	DNV-GL, EAC
Conformity	CQC, CE
General ordering information	
EAN13 code	8015747042062
Tariff number	85369095
Packaging Information	
Packaging length	180,00 mm
Packaging height	130,00 mm
Packaging width	150,00 mm
Packaging weight	0,80 kg
Packaging volume	3,51 dm ³
Packaging description	Carton box
Packaging quantity	60 Pcs
Packaging EAN code	8015747221320
Sub-packaging length	35,00 mm
Sub-packaging height	40,00 mm
Sub-packaging width	155,00 mm
Sub-packaging weight	0,13 kg
Sub-packaging volume	0,22 dm ³
Sub-packaging description	Carton
Sub-packaging quantity	10 Pcs
Sub-packaging EAN barcode	8015747042079

Part number

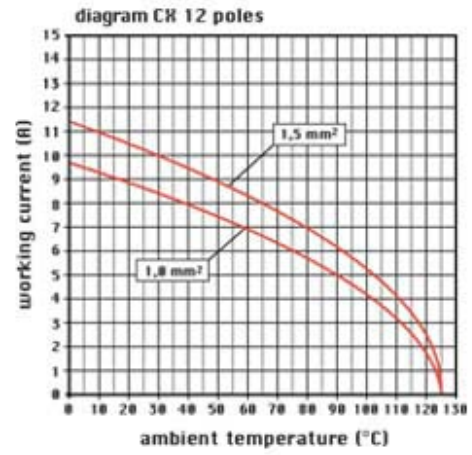
CX 12 DM



Catalogue drawings



Derating curves



Notes

the modular inserts must be installed in suitable frames which in turn are installed in traditional housings or COB panel support