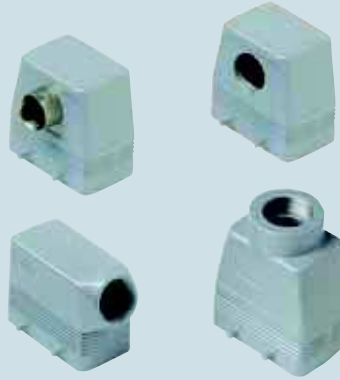




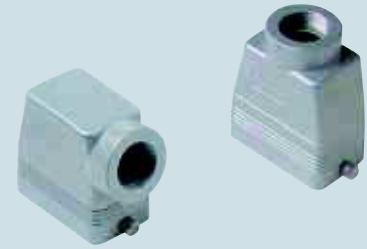
inserts:		page
CDD	42 poles + ⊕	55
CQE	18 poles + ⊕	75
CN	10 poles + ⊕	81
CCE	10 poles + ⊕	88
CNE, CSE.....	10 poles + ⊕	89
CSS	10 poles + ⊕	100
CMSE	3+2 (aux) poles + ⊕	114
CMCE	3+2 (aux) poles + ⊕	114
CX	8/24 poles + ⊕	129
MIXO	3 modules	137÷151

insert centre distance:
57 x 27 mm

hoods with 4 pegs



hoods with 2 pegs



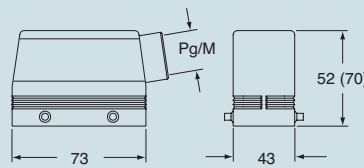
description	part No.		part No.		part No.		part No.	
		entry Pg		entry M		entry Pg		entry M
with pegs, side entry	CHO 10	16	MHO 10.20	20	CHO 10 L	16	MHO 10 L20	20
with pegs, side entry			MHO 10.25	25			MHO 10 L25	25
with pegs, side entry, high construction	CAO 10.21	21	MAO 10.32	32	CAO 10 L21	21	MAO 10 L32	32
with pegs, side entry, high construction	CAO 10.29	29	MAO 10.40	40	CAO 10 L29	29	MAO 10 L40	40
with pegs, top entry	CHV 10	16	MHV 10.20 **	20	CHV 10 L	16	MHV 10 L20 **	20
with pegs, top entry			MHV 10.25	25			MHV 10 L25	25
with pegs, top entry, high construction	CAV 10.21	21	MAV 10.32	32	CAV 10 L21	21	MAV 10 L32	32
with pegs, top entry, high construction	CAV 10.29	29	MAV 10.40	40	CAV 10 L29	29	MAV 10 L40	40
with pegs, frontal entry, high construction	CAF 10	16	MAF 10.20	20				
with pegs, frontal entry, high constr., without adaptor *	CFF 10	16	MFF 10.20	20				

* enclosure without adaptor, threaded on the body, to be used only with a complete cable clamp.

** can only be used with a complete cable clamp (to be purchased separately)

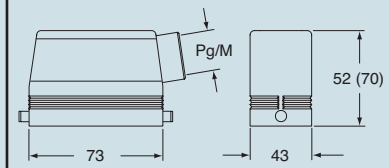
dimensions in mm

CHO (CAO) and MHO (MAO)

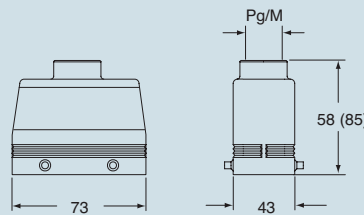


dimensions in mm

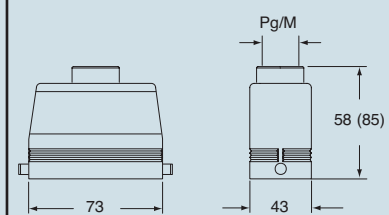
CHO L (CAO L) and MHO L (MAO L)



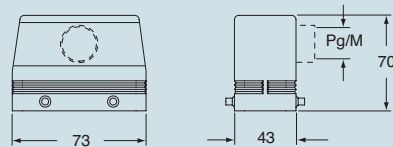
CHV (CAV) and MHV (MAV)



CHV L (CAV L) and MHV L (MAV L)



CAF/CFF and MAF/MFF



CALUS® Type 4/4X/12

dimensions indicated are not binding and may be changed without notice

size 57.27