

enclosures: **size "77.27"**

- standard** ..... page: 198 ÷ 202
- for 180 °C** ..... page: 208
- aggressive environments** page: 209
- EMC** ..... page: 210

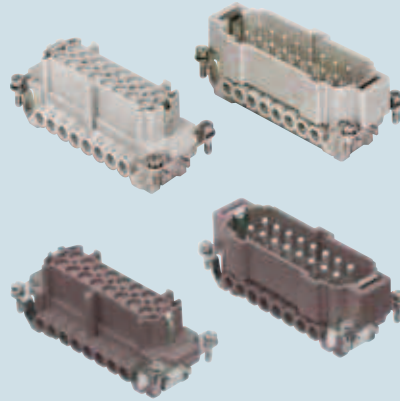
panel supports:

- COB** ..... page: 258 ÷ 259

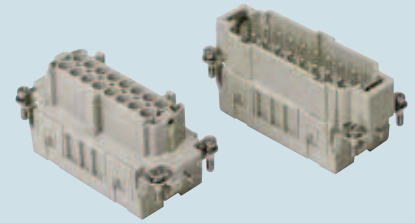
- features according to EN 61984:

- 16A 500V 6kV 3**
- UL, CSA, CCC, GL certified
- for maximum current load, see the insert load curve section on page 31

## inserts, screw terminal connections



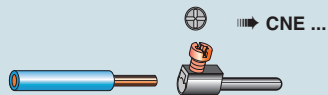
## inserts, spring terminal connections



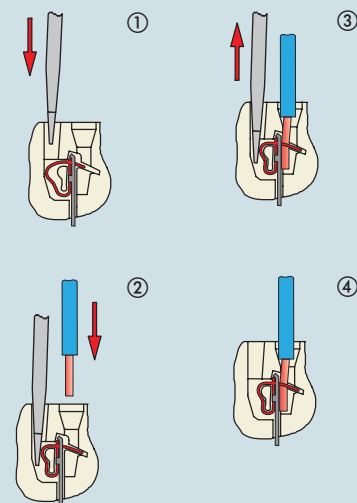
description	part No.	part No.
indirect, with plate 1) female inserts with female contacts male inserts with male contacts	<b>CNEF 16 T</b> <b>CNEM 16 T</b>	
direct, without plate 2) female inserts with female contacts male inserts with male contacts	<b>CNEF 16 TX</b> <b>CNEM 16 TX</b>	
indirect, with plate 1), use in up to 180 °C female inserts with female contacts, brown male inserts with male contacts, brown	<b>CNEF 16 RYT *</b> <b>CNEM 16 RYT *</b>	
spring terminal female inserts with female contacts male inserts with male contacts		<b>CSF 16</b> <b>CSM 16</b>

- 1) for non-prepared conductors
- 2) for bush terminal conductors

\* CNE...RY version without plastic wire insertion guide cover available on request.

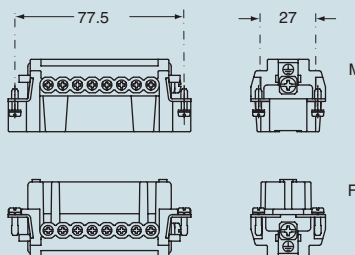


### connection with spring terminal

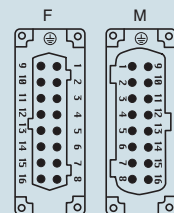


dimensions indicated are not binding and may be changed without notice

dimensions in mm

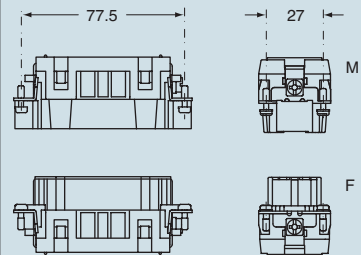


contacts side (front view)

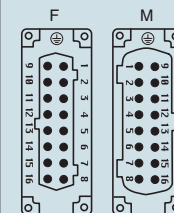


- inserts with plate, for section conductors: 0.5 ÷ 2.5 mm<sup>2</sup> - AWG 20 ÷ 14
- inserts without plate, for section conductors: 0.25 ÷ 2.5 mm<sup>2</sup> - AWG 24 ÷ 14
- torsion couple recommended for conductor fastening screws and stripping length see section feature of inserts on page 13

dimensions in mm



contacts side (front view)



- inserts for section conductors: 0.14 ÷ 2.5 mm<sup>2</sup> - AWG 26 ÷ 14
- stripping length see section feature of inserts on page 13