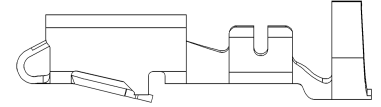
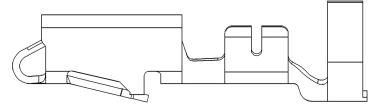


SYMBOL DEFINITION		MISSING SYMBOLS	
A DIMENSION WITHOUT AN INSPECTION REPORT SYMBOL DOES NOT REQUIRE INSPECTION. IT MAY BE CONTROLLED ON THE INDIVIDUAL COMPONENT DRAWING.	TOTAL NO OF INSPECTIONS REQUIRED	4	6 9
	LAST NO. USED	10	

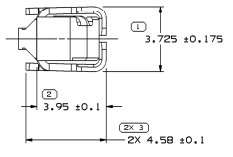
DATE	REV	DESCRIPTION	ZONE	REVISION HISTORY	AUTH	DR	APP/STATUS
14JAN00	R 001	-	-	CLEARED REV COLUMN: ALL ACTIVE PARTS-UPDATED PWM ATTRIBUTES	196648	CRN	661/LLD
17JUL00	R 002	-	-	REINSTATE 12077412	000010	JTB	JTB JA
15OCT04	R 03	-	-	ALL ACTIVE PARTS - ADDED TERMINAL ID DRAWING NAME	260003	RTV	JHW/MW
24FEB05	R 04	-	-	ALL ACTIVE PARTS - REVISED MAT'L SPEC &	265136	JS	JS TM
18MAY05	R 05	-	-	12176389 - UPDATED PWM ATTRIBUTES	268280	LD	FKV/WTM
30SEP05	R 06	-	-	12077411, 12077413, 12084201, 12120493 & 12176389 - UPDATED PWM ATTRIBUTES 12077411 - ADDED 1.0 MM CABLE: ALL ACTIVE PARTS - ADDED NOTE &	272905	JTV	AW/WTM
11JAN08	R 07	-	-	ALL PARTS - 2X .5 +/-0.15 TYP WAS 2X .5 +/-0.1 TYP	403419	MHC	MHC/WTM



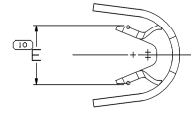
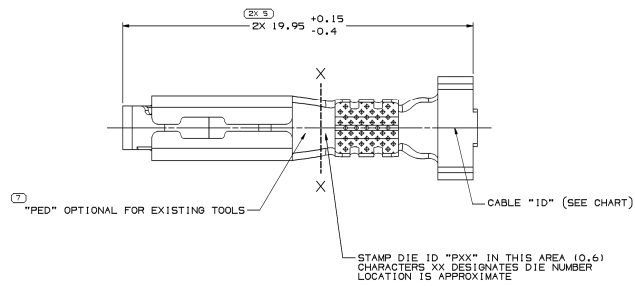
TYPE 102
SAME AS TYPE 101
EXCEPT AS SHOWN



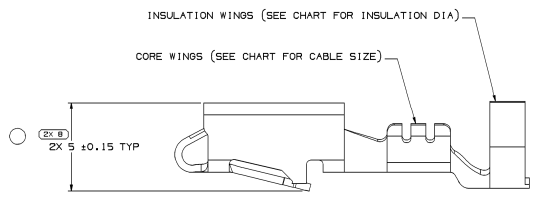
TYPE 103
SAME AS TYPE 101
EXCEPT AS SHOWN



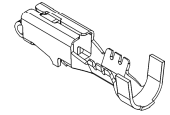
VIEW TO X-X



VIEW TO X-X



TYPE 101



VIEW SCALE DOES NOT REFLECT ACTUAL PART SIZE

- NOTES
- UNLESS OTHERWISE SPECIFIED AND/OR INDICATED: DIMENSIONS ARE TO FACE OF VIEW SHOWN AND AUTOMATICALLY ROUNDED BY COMPUTER FOR INSPECTION (SEE MATH MODEL FOR PRECISE DIMENSIONS). FOR ALL OTHER DIMENSIONS NOT SHOWN BUT REQUIRED FOR TOOL BUILD, SEE MATH MODEL FOR PRECISE TOOL PATH DATA.
 - R 0.4 PERMISSIBLE ON ALL "SHARP" CORNERS
 - RECOMMENDED MATING BLADE 2.8 X 0.81.
 - TERMINALS TO CRIMP AROUND AND RETAIN CAVITY SEAL 12015323 OR EQUIVALENT.
 - "PXX" INDICATED "P" PLUS LAST TWO DIGITS OF MAKE SERIES NUMBER (P01, P02, P03, ETC.)
 - DO NOT PROBE, TEST OR OTHERWISE CONTACT THE INTERIOR REGION (THE SPRING OR ANY MOVING PART) OF THIS TERMINAL. SEVERE DAMAGE CAN OCCUR, COMPROMISING THE PERFORMANCE OF THE ELECTRICAL INTERFACE.

PART NO (REV)	STATUS	MAT'L SIZE	SPEC	PART NO (REV)	STATUS	MAT'L SPEC	PLATED	SIZE (MMF)	CABLE DIA	10 TYPE	E	
0.406 X 30.56				12176390	A7			0.35-0.5	1.84-2.51	21	101	2.4 +/-0.2
0.406 X 30.56				12176389	AB			0.8-1	2.03-3.12	19	101	3.220.4
0.406 X 30.56				12176388	A7			2-3	2.45-3.80	13	103	4.0.4
0.406 X 30.56				12176387	A7			5	3.49-3.65	12	103	4.6x0.4
0.406 X 30.56				12129493	CB			2-3	2.45-3.80	13	103	4.0.4
0.406 X 30.56				12084201	E11			0.35-0.5	1.84-2.51	21	101	2.4 +/-0.2
0.406 X 30.56				12077413	E11			3	3.49-3.65	12	103	4.6x0.4
0.406 X 30.56				12077412	E9			1-2	2.48-3.05	15	103	3.7x0.4
0.406 X 30.56				12077411	E11			0.5-0.8-1.0	2.03-3.12	19	101	3.220.4
0.406 X 32.54				12045521	DB	OBsolete		3	3.49-3.65	12	102	4.6x0.4
0.406 X 32.54				12034454	FB	OBsolete		1-2	2.48-3.05	15	102	3.7x0.4
0.406 X 32.54				12020648	HB	OBsolete		0.5-0.8	2.03-3.12	19	101	3.220.4

DELPHI
DELPHI FORD/DAE ELECTRICAL/ELECTRONIC ARCHITECTURE
PART NO

DATE

OR

APPROV: JORGE BARBA 29MAY98

APPROV: OSCAR DUCHO 02 JUN 98

DESIGN: D. GALLEGGOS 18 JUL 98

UNLESS OTHERWISE SPECIFIED
ALL DIMENSIONS ARE IN MILLIMETERS

THIRD ANGLE PROJECTION

DO NOT SCALE

USE MATH

12089195

101