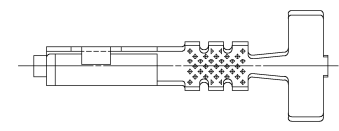
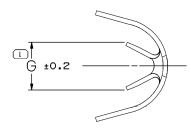
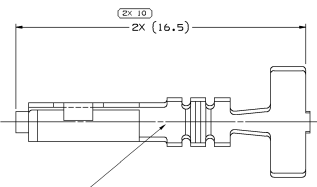
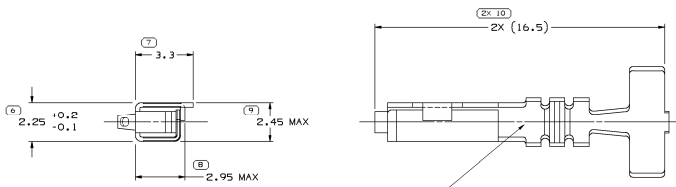
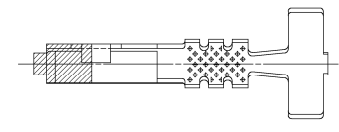
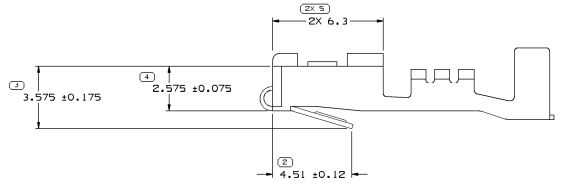


SYMBOL DEFINITION		MISSING SYMBOLS		REVISED HISTORY		AUTH	DR	APP'D
A DIMENSION WITHOUT AN INSPECTION REPORT SYMBOL DOES NOT REQUIRE INSPECTION. IT MAY BE CONTROLLED ON THE INDIVIDUAL COMPONENT DRAWING.		TOTAL NO OF INSPECTIONS REQUIRED	NO MISSING SYMBOL NUMBER	DATE	DESCRIPTION			
		12		220402	R 10	-	-	ALL PARTS - CLEARED REV COLUMN & REVISED MATERIAL SPECS: 12048074 - UPDATED PDM ATTRIBUTES
				06F03	R 12	-	-	ALL ACTIVE PARTS - UPDATED PDM ATTRIBUTES
				14003	R 13	-	-	ALL ACTIVE PARTS - UPDATED PDM ATTRIBUTES
				17F04	R 14	-	-	12048074, 12084200, 12092702, 12160222, 12160223, 1330225, 13326396 & 13366078 T.O.D. UPDATED
				19004	R 15	-	-	ALL ACTIVE PARTS - ADDED TERMINAL 10 NOTE
				09M06	R 16	-	-	12084200 & 13326396 - UPDATED PDM ATTRIBUTES
				24M106	R 17	-	-	12092702 - OBSOLETE
				16J06	R 18	-	-	ALL ACTIVE PARTS - PDM WAS 44
				27JL12	R 19	-	-	12160222-23 - UPDATED MATERIAL CALLOUT AND ADDED TYPE 203
				02JA13	R 20	-	-	12160222-23 - UPDATED PDM ATTRIBUTES
				24JA13	R 21	-	-	12160222-23 - UPDATED PDM ATTRIBUTES



STAMP DIE ID "PXX" IN THIS AREA (0.6) CHARACTERS MAX. DESIGNATED DIE NUMBER LOCATION IS APPROXIMATE.

TYPE 202
SAME AS TYPE 101 EXCEPT AS SHOWN



TYPE 203
SAME AS TYPE 202 EXCEPT AS SHOWN

TYPE 201

- NOTES:
- UNLESS OTHERWISE SPECIFIED AND/OR INDICATED: DIMENSIONS ARE TO FACE OF VIEW SHOWN AND AUTOMATICALLY ROUNDED BY COMPUTER FOR INSPECTION. (SEE MATH MODEL FOR PRECISE DIMENSION). FOR ALL OTHER DIMENSIONS NOT SHOWN BUT REQUIRED FOR TOOL BUILD, SEE MATH MODEL FOR PRECISE TOOL PATH DATA.
 - RECOMMENDED MATING BLADE - WIDTH : 1.64/1.4 THICKNESS : 0.86/0.79 LENGTH : 7.1/6.9
 - "PXX" INDICATES "P" PLUS LAST TWO DIGITS OF MAKE SERIES NUMBER (P01, P02, P03, ETC).
 - DO NOT PROBE, TEST OR OTHERWISE CONTACT THE INTERIOR REGION (THE SPRING OR ANY MOVING PART) OF THIS TERMINAL. SEVERE DAMAGE CAN OCCUR, COMPROMISING THE PERFORMANCE OF THE ELECTRICAL INTERFACE.

PART NO	REV/N/P	MAT'L SIZE	MAT'L SPEC	PART NO	REV/N/P	MAT'L SIZE	MAT'L SPEC
		0.254 X 29.8	M3620 HM 654 SLC BRZ 1/2 HD GOLD STR			1-0.8-0.5	60 2.8-2.03 202 3
		0.254 X 29.8	M3620 HM 654 SLC BRZ 1/2 HD GOLD STR			0.5-0.35	21 2.2-1.3 202 2.1
		0.254 X 30.96	M3640929 17410 BECU 1/2 HT SN PLTD			1-0.8-0.5	60 2.8-2.03 202 3
		0.254 X 30.96	M6522UN 170 BECU 1/4 HM AG/NI PLTD			1-0.8	17 2.65-1.85 203 3
12048202	03 AB	0.254 X 30.96	M3604401 654 SLC BRZ 1/2 HD			0.5-0.35	21 2.2-1.3 203 2.1
		0.254 X 30.96	M3606929 654 SLC BRZ 1/2 HD SN PLTD			0.5-0.35	21 2.2-1.3 202 2.1
		0.254 X 30.96	P3604ABP 654 SLC BRZ 1/2 HD SN PLTD			0.35	22 2.1-1.47 201 2.2
12092667	B1	0.254 X 30.96	PM003604 401 654 SLC BRZ 1/2 HD			1-0.8-0.5	60 2.8-2.03 202 3
		UNPLATED				SIZE (MM)	10
						CABLE	DIA
						TYPE	6

DELPHI
DELPHI PACKARD ELECTRICAL/ELECTRONIC ARCHITECTURE

THIS DRAWING IS THE PROPERTY OF DELPHI CORPORATION. NO REPRODUCTION OR TRANSMISSION OF THIS DOCUMENT OR ITS CONTENTS IS PERMITTED WITHOUT EXPRESS WRITTEN PERMISSION FROM DELPHI CORPORATION.

UNLESS OTHERWISE SPECIFIED:
DIMENSIONS ARE TO FACE UNLESS OTHERWISE SPECIFIED
DIMENSIONS ARE TO CENTER UNLESS OTHERWISE SPECIFIED
DIMENSIONS ARE TO CENTER UNLESS OTHERWISE SPECIFIED
DIMENSIONS ARE TO CENTER UNLESS OTHERWISE SPECIFIED
DIMENSIONS ARE TO CENTER UNLESS OTHERWISE SPECIFIED

PROCESS SENSITIVE DIMENSION

THIRD ANGLE PROJECTION

DO NOT SCALE

DATE: 10/11/01

SCALE: 1:1

TRM: 150 TANG

12047884

REV: 1 OF 1