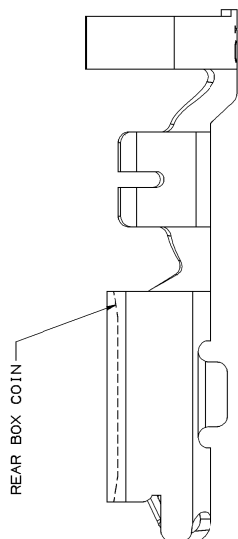
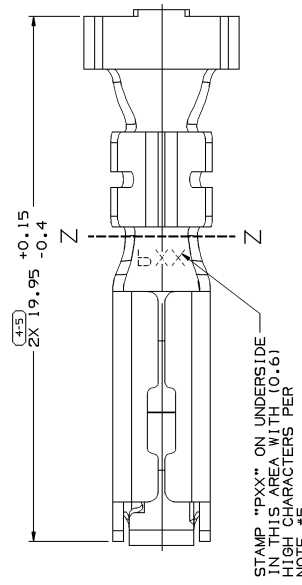


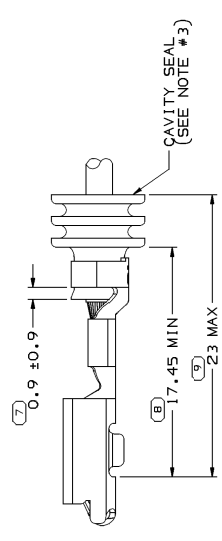
12	11	10	9	8	7	6	5	4	3	2	1																																																																								
<table border="1"> <tr> <th colspan="2">SYMBOL DEFINITION</th> <th colspan="2">MISSING NUMBERS</th> <th colspan="2">DWG STATUS</th> <th colspan="2">ZONE</th> <th colspan="2">REVISION HISTORY</th> <th colspan="2">AUTH</th> </tr> <tr> <td colspan="2">THE NUMBER INSIDE THE SYMBOL CORRESPONDS TO THE NUMBER ON THE INSPECTION REPORT FOR THIS DRAWING/PART NUMBER</td> <td colspan="2">TOTAL NO. OF SYMBOLS CORRESPONDS TO THE DRAWING LAST NO. USED</td> <td colspan="2">DATE (STG) REV (M/P) CHR</td> <td colspan="2">DATE</td> <td colspan="2">ALL PARTS - REDRAWN TO PD</td> <td colspan="2">000009 ENR/RCH 08</td> </tr> <tr> <td colspan="2"></td> <td colspan="2">7</td> <td colspan="2">R 001</td> <td colspan="2">15383341</td> <td colspan="2">15383341 - RELEASED</td> <td colspan="2">000005 ENR/RCH 08</td> </tr> <tr> <td colspan="2"></td> <td colspan="2">9</td> <td colspan="2">R 03</td> <td colspan="2">100006</td> <td colspan="2">ALL PARTS - ADDED TERMINAL ID NOTE AND NOTE #4 &amp; #5</td> <td colspan="2">285378 JTZ/JAA/MKA</td> </tr> <tr> <td colspan="2"></td> <td colspan="2"></td> <td colspan="2">R 04</td> <td colspan="2">020006</td> <td colspan="2">12176855 - MAT'L SPEC WAS W365E28</td> <td colspan="2">286475 RTY/JAA/MKA</td> </tr> <tr> <td colspan="2"></td> <td colspan="2"></td> <td colspan="2">R 05</td> <td colspan="2">080006</td> <td colspan="2">12176855 MATERIAL SPEC REVISED PER CHANGE NOTICE 281527</td> <td colspan="2">287674 MM/MM/MKA</td> </tr> </table>												SYMBOL DEFINITION		MISSING NUMBERS		DWG STATUS		ZONE		REVISION HISTORY		AUTH		THE NUMBER INSIDE THE SYMBOL CORRESPONDS TO THE NUMBER ON THE INSPECTION REPORT FOR THIS DRAWING/PART NUMBER		TOTAL NO. OF SYMBOLS CORRESPONDS TO THE DRAWING LAST NO. USED		DATE (STG) REV (M/P) CHR		DATE		ALL PARTS - REDRAWN TO PD		000009 ENR/RCH 08				7		R 001		15383341		15383341 - RELEASED		000005 ENR/RCH 08				9		R 03		100006		ALL PARTS - ADDED TERMINAL ID NOTE AND NOTE #4 & #5		285378 JTZ/JAA/MKA						R 04		020006		12176855 - MAT'L SPEC WAS W365E28		286475 RTY/JAA/MKA						R 05		080006		12176855 MATERIAL SPEC REVISED PER CHANGE NOTICE 281527		287674 MM/MM/MKA	
SYMBOL DEFINITION		MISSING NUMBERS		DWG STATUS		ZONE		REVISION HISTORY		AUTH																																																																									
THE NUMBER INSIDE THE SYMBOL CORRESPONDS TO THE NUMBER ON THE INSPECTION REPORT FOR THIS DRAWING/PART NUMBER		TOTAL NO. OF SYMBOLS CORRESPONDS TO THE DRAWING LAST NO. USED		DATE (STG) REV (M/P) CHR		DATE		ALL PARTS - REDRAWN TO PD		000009 ENR/RCH 08																																																																									
		7		R 001		15383341		15383341 - RELEASED		000005 ENR/RCH 08																																																																									
		9		R 03		100006		ALL PARTS - ADDED TERMINAL ID NOTE AND NOTE #4 & #5		285378 JTZ/JAA/MKA																																																																									
				R 04		020006		12176855 - MAT'L SPEC WAS W365E28		286475 RTY/JAA/MKA																																																																									
				R 05		080006		12176855 MATERIAL SPEC REVISED PER CHANGE NOTICE 281527		287674 MM/MM/MKA																																																																									



OPTIONAL CONSTRUCTION



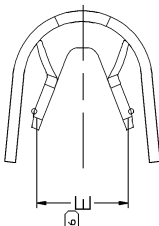
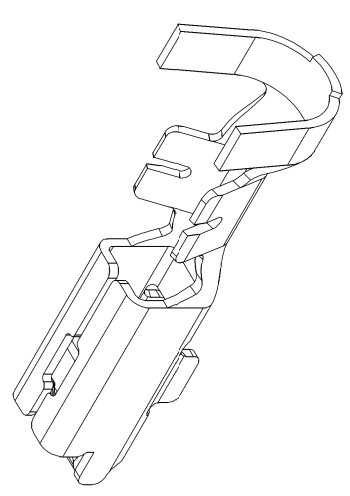
VIEW Z-Z



OVERALL DIMENSION MUST BE USED TO ENSURE PROPER FUNCTION OF TPA.

TERMINAL TO SEAL RELATIONSHIP

SCALE 5:1



NOTES

- UNLESS OTHERWISE SPECIFIED AND/OR INDICATED DIMENSIONS ARE TO FACE OF VIEW SHOWN AND AS SHOWN UNLESS OTHERWISE SPECIFIED. DIMENSIONS FOR INSPECTION AND OTHER DIMENSIONS NOT SHOWN BUT REQUIRED FOR TOOL BUILD, SEE MATH MODEL FOR PRECISE TOOL PATH DATA.
- RECOMMENDED MATING BLADE - WIDTH  $2.8 \pm 0.08$ , THICKNESS  $0.825 \pm 0.035$
- TERMINAL TO CRIMP AROUND AND RETAIN CAVITY SEAL 12015323 OR EQUIVALENT.
- DO NOT PROBE TEST OR OTHERWISE CONTACT THE INTERIOR REGION (THE SPRING OR ANY MOVING PART) OF THIS TERMINAL SEVERE DAMAGE CAN OCCUR, COMPROMISING THE PERFORMANCE OF THE ELECTRICAL INTERFACE.
- "PXX" INDICATES "P" PLUS THE LAST TWO DIGITS OF MAKE DIE SERIES NUMBER (P01, P02, P03, ETC.).

**DELPHI**  
DELPHI PACKARD ELECTRIC SYSTEMS  
WARREN, OH

DR	DATE
AP001 E. RODRIGUEZ	22FEE00
AP002 B. CHACON	09H000
AP003 D. GALLEGO	09H000
AP004	
AP005	

SUBSTITUTES OF CONCERN AND RECYCLED MATERIALS:  
SEE CHART

DRAWING NAME: TAXI TERM F W/P 280 SEALED  
DRAWING NUMBER: 12129032  
SIZE: A1  
SCALE: 10:1

PART DRAWING

STYLE: \_\_\_\_\_  
VOLUME: (CH) \_\_\_\_\_  
DISTR CODE: \_\_\_\_\_

UNLESS OTHERWISE SPECIFIED, THIS DOCUMENT IS IN ACCORDANCE WITH ASME Y14.9M-1994 FOR DIMENSIONS AND UNLESS OTHERWISE SPECIFIED, DIMENSIONS ARE TO FACE UNLESS INDICATED OTHERWISE.

ALL DIMENSIONS ARE IN MILLIMETERS

PROCESS SENSITIVE DIMENSION (SEE NOTE #1) INDICATE BY UNDERLINE. DIMENSIONS ARE TO FACE UNLESS OTHERWISE SPECIFIED.

FROM	TO	DIAMETER/TOLERANCE	FASE	MM	CHART	ID
0	> 12	3.05-2.48	15	3-7		
0	> 12	4.2-3	11	4-6		

THIRD ANGLE PROJECTION  
DO NOT SCALE  
USE MATH DATA

DATE: 10/11/01  
TIME: 10:01  
USER: JTC

PART NO	REV	N/P	STATUS	MAT'L SIZE	MAT'L SPEC	PLATED	SIZE	DIAM	ID	BLANK	TYPE	TOL
0.406X30.56							3/2	3.8-2.45	13	4		
0.406X30.56							5/3	4.2-3	11	4.6		
0.406X30.56							2/1	3.05-2.48	15	3-7		
							5/3	4.2-3	11	4.6		