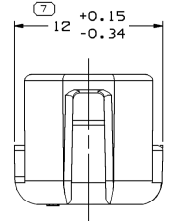
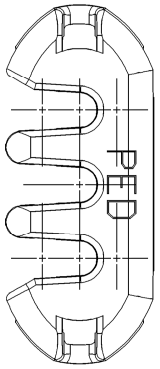
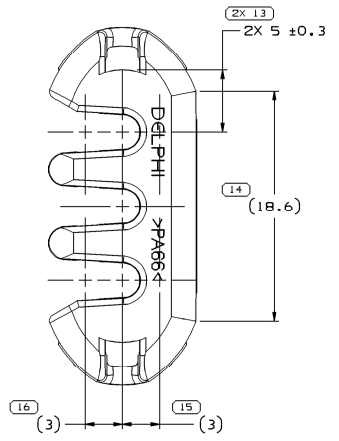
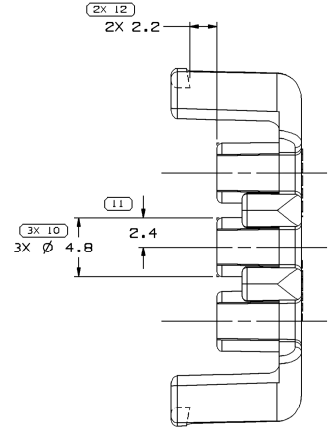
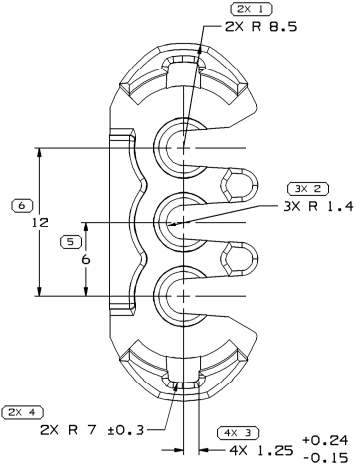
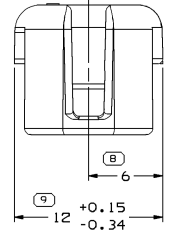


SYMBOL DEFINITION		MISSING SYMBOLS	
A DIMENSION WITHOUT AN INSPECTION REPORT SYMBOL DOES NOT REQUIRE INSPECTION. IT MAY BE CONTROLLED ON THE INDIVIDUAL COMPONENT DRAWING.	TOTAL NO OF INSPECTIONS REQUIRED	NO MISSING SYMBOL NUMBER	27
	LAST NO. USED		16

DWG STATUS				REVISION HISTORY				AUTH					
DATE	STG	REV	R/P	CHG	ZONE								
10N000	R	01	-	-		ALL PARTS - ADDED OPTIONAL CONSTRUCTION				204250	RVP	JLZ	GMC
13FE01	R	02	-	-		ALL PARTS - DIMENSION R 7±0.3 WAS R 0.7±0.3				206528	RVP	JLZ	GMC
25N002	R	03	-	-		ALL PARTS - 12 +0.15/-0.34 WAS 12 +0.15/-0.2 (2 PLCS)				233847	RH	RH	ET
30JA04	R	04	-	-		12052845 - UPDATED PDM ATTRIBUTES				251419	LFS	LFS	ET
200C06	R	05	-	-		12052845 - MAT'L SPEC WAS M3592002				286019	JBD	AUG	JES



NOTES

- UNLESS OTHERWISE SPECIFIED AND/OR INDICATED: DIMENSIONS ARE TO FACE OF VIEW SHOWN AND AUTOMATICALLY ROUNDED BY COMPUTER FOR INSPECTION (SEE MATH MODEL FOR PRECISE DIMENSIONS). FOR ALL OTHER DIMENSIONS NOT SHOWN BUT REQUIRED FOR TOOL BUILD, SEE MATH MODEL FOR PRECISE TOOL PATH DATA.
- TOOL CAVITY IDENTIFICATION SHOULD BE LOCATED AS CLOSE TO THE GATE AS POSSIBLE.
- THIS PART USED IN ASSEMBLY 12059595.
- MATERIAL RECYCLING CODE PER SAE J1344. (1)X(0.1) RAISED CHARACTERS AS SHOWN TO BE LOCATED ON ANY EXTERIOR SURFACE. OPTIONAL CONSTRUCTION TO BE "PED" OR NO LOGO.
- THIS PART IS NOT CONTROLLED FOR AUTOMATIC FEEDING.
- MATING COMPONENTS OR EQUIVALENT: CONNECTOR 12052843 & 12052844
- (1)X(0.1) RAISED DELPHI CORPORATE BRAND TO BE LOCATED ON ANY EXTERIOR SURFACE, PREFERABLY VISIBLE AT FINAL ASSEMBLY. OPTIONAL CONSTRUCTION TO BE "PED" OR NO LOGO.
- MAX CABLE DIA FOR THIS PART IS 2.8 MM.



OPTIONAL CONSTRUCTION

PART NO	REV	N/P	STATUS	MATERIAL SPECIFICATION AND COLOR	VOL CM ³
15324164	A5	-		M3586003 PA46 HS IM GRA	0.881
15326074	A4	-		M3592015 PA66 HS IM GRN LT	0.881
12162421	A6	-		M3592001 PA66 HS IM BLK	0.881
12052845	07	-		M3592024 PA66 HS IM CRM	0.881

DIMENSIONAL RANGE (MM)	TOLERANCE UNLESS OTHERWISE SPECIFIED	CHART #1
FROM TO		
>0	>30	>70
>30	>100	>150
>100	>200	>250
>200	>300	>400
1±0.15	1±0.2	1±0.3
1±0.2	1±0.3	1±0.4
1±0.3	1±0.4	1±0.5
1±0.4	1±0.5	1±0.6
1±0.5	1±0.6	1±0.7
1±0.6	1±0.7	1±0.8
1±0.7	1±0.8	1±0.9
1±0.8	1±0.9	1±1.0
1±0.9	1±1.0	1±1.2
1±1.0	1±1.2	1±1.5
1±1.2	1±1.5	1±2.0
1±1.5	1±2.0	1±3.0
1±2.0	1±3.0	1±4.0
1±3.0	1±4.0	1±5.0
1±4.0	1±5.0	1±6.0
1±5.0	1±6.0	1±8.0
1±6.0	1±8.0	1±10.0
1±8.0	1±10.0	1±15.0
1±10.0	1±15.0	1±20.0
1±15.0	1±20.0	1±30.0
1±20.0	1±30.0	1±40.0
1±30.0	1±40.0	1±50.0
1±40.0	1±50.0	1±60.0
1±50.0	1±60.0	1±80.0
1±60.0	1±80.0	1±100.0
1±80.0	1±100.0	1±150.0
1±100.0	1±150.0	1±200.0
1±150.0	1±200.0	1±300.0
1±200.0	1±300.0	1±400.0
1±300.0	1±400.0	1±500.0
1±400.0	1±500.0	1±600.0
1±500.0	1±600.0	1±800.0
1±600.0	1±800.0	1±1000.0
1±800.0	1±1000.0	1±1500.0
1±1000.0	1±1500.0	1±2000.0
1±1500.0	1±2000.0	1±3000.0
1±2000.0	1±3000.0	1±4000.0
1±3000.0	1±4000.0	1±5000.0
1±4000.0	1±5000.0	1±6000.0
1±5000.0	1±6000.0	1±8000.0
1±6000.0	1±8000.0	1±10000.0
1±8000.0	1±10000.0	1±15000.0
1±10000.0	1±15000.0	1±20000.0
1±15000.0	1±20000.0	1±30000.0
1±20000.0	1±30000.0	1±40000.0
1±30000.0	1±40000.0	1±50000.0
1±40000.0	1±50000.0	1±60000.0
1±50000.0	1±60000.0	1±80000.0
1±60000.0	1±80000.0	1±100000.0
1±80000.0	1±100000.0	1±150000.0
1±100000.0	1±150000.0	1±200000.0
1±150000.0	1±200000.0	1±300000.0
1±200000.0	1±300000.0	1±400000.0
1±300000.0	1±400000.0	1±500000.0
1±400000.0	1±500000.0	1±600000.0
1±500000.0	1±600000.0	1±800000.0
1±600000.0	1±800000.0	1±1000000.0
1±800000.0	1±1000000.0	1±1500000.0
1±1000000.0	1±1500000.0	1±2000000.0
1±1500000.0	1±2000000.0	1±3000000.0
1±2000000.0	1±3000000.0	1±4000000.0
1±3000000.0	1±4000000.0	1±5000000.0
1±4000000.0	1±5000000.0	1±6000000.0
1±5000000.0	1±6000000.0	1±8000000.0
1±6000000.0	1±8000000.0	1±10000000.0
1±8000000.0	1±10000000.0	1±15000000.0
1±10000000.0	1±15000000.0	1±20000000.0
1±15000000.0	1±20000000.0	1±30000000.0
1±20000000.0	1±30000000.0	1±40000000.0
1±30000000.0	1±40000000.0	1±50000000.0
1±40000000.0	1±50000000.0	1±60000000.0
1±50000000.0	1±60000000.0	1±80000000.0
1±60000000.0	1±80000000.0	1±100000000.0
1±80000000.0	1±100000000.0	1±150000000.0
1±100000000.0	1±150000000.0	1±200000000.0
1±150000000.0	1±200000000.0	1±300000000.0
1±200000000.0	1±300000000.0	1±400000000.0
1±300000000.0	1±400000000.0	1±500000000.0
1±400000000.0	1±500000000.0	1±600000000.0
1±500000000.0	1±600000000.0	1±800000000.0
1±600000000.0	1±800000000.0	1±1000000000.0
1±800000000.0	1±1000000000.0	1±1500000000.0
1±1000000000.0	1±1500000000.0	1±2000000000.0
1±1500000000.0	1±2000000000.0	1±3000000000.0
1±2000000000.0	1±3000000000.0	1±4000000000.0
1±3000000000.0	1±4000000000.0	1±5000000000.0
1±4000000000.0	1±5000000000.0	1±6000000000.0
1±5000000000.0	1±6000000000.0	1±8000000000.0
1±6000000000.0	1±8000000000.0	1±10000000000.0
1±8000000000.0	1±10000000000.0	1±15000000000.0
1±10000000000.0	1±15000000000.0	1±20000000000.0
1±15000000000.0	1±20000000000.0	1±30000000000.0
1±20000000000.0	1±30000000000.0	1±40000000000.0
1±30000000000.0	1±40000000000.0	1±50000000000.0
1±40000000000.0	1±50000000000.0	1±60000000000.0
1±50000000000.0	1±60000000000.0	1±80000000000.0
1±60000000000.0	1±80000000000.0	1±100000000000.0
1±80000000000.0	1±100000000000.0	1±150000000000.0
1±100000000000.0	1±150000000000.0	1±200000000000.0
1±150000000000.0	1±200000000000.0	1±300000000000.0
1±200000000000.0	1±300000000000.0	1±400000000000.0
1±300000000000.0	1±400000000000.0	1±500000000000.0
1±400000000000.0	1±500000000000.0	1±600000000000.0
1±500000000000.0	1±600000000000.0	1±800000000000.0
1±600000000000.0	1±800000000000.0	1±1000000000000.0
1±800000000000.0	1±1000000000000.0	1±1500000000000.0
1±1000000000000.0	1±1500000000000.0	1±2000000000000.0
1±1500000000000.0	1±2000000000000.0	1±3000000000000.0
1±2000000000000.0	1±3000000000000.0	1±4000000000000.0
1±3000000000000.0	1±4000000000000.0	1±5000000000000.0
1±4000000000000.0	1±5000000000000.0	1±6000000000000.0
1±5000000000000.0	1±6000000000000.0	1±8000000000000.0
1±6000000000000.0	1±8000000000000.0	1±10000000000000.0
1±8000000000000.0	1±10000000000000.0	1±15000000000000.0
1±10000000000000.0	1±15000000000000.0	1±20000000000000.0
1±15000000000000.0	1±20000000000000.0	1±30000000000000.0
1±20000000000000.0	1±30000000000000.0	1±40000000000000.0
1±30000000000000.0	1±40000000000000.0	1±50000000000000.0
1±40000000000000.0	1±50000000000000.0	1±60000000000000.0
1±50000000000000.0	1±60000000000000.0	1±80000000000000.0
1±60000000000000.0	1±80000000000000.0	1±100000000000000.0
1±80000000000000.0	1±100000000000000.0	1±150000000000000.0
1±100000000000000.0	1±150000000000000.0	1±200000000000000.0
1±150000000000000.0	1±200000000000000.0	1±300000000000000.0
1±200000000000000.0	1±300000000000000.0	1±400000000000000.0
1±300000000000000.0	1±400000000000000.0	1±500000000000000.0
1±400000000000000.0	1±500000000000000.0	1±600000000000000.0
1±500000000000000.0	1±600000000000000.0	1±800000000000000.0
1±600000000000000.0	1±800000000000000.0	1±1000000000000000.0
1±800000000000000.0	1±1000000000000000.0	1±1500000000000000.0
1±1000000000000000.0	1±1500000000000000.0	1±2000000000000000.0
1±1500000000000000.0	1±2000000000000000.0	1±3000000000000000.0
1±2000000000000000.0	1±3000000000000000.0	1±4000000000000000.0
1±3000000000000000.0	1±4000000000000000.0	1±5000000000000000.0
1±4000000000000000.0	1±5000000000000000.0	1±6000000000000000.0
1±5000000000000000.0	1±6000000000000000.0	1±8000000000000000.0
1±6000000000000000.0	1±8000000000000000.0	1±10000000000000000.0
1±8000000000000000.0	1±10000000000000000.0	1±15000000000000000.0
1±10000000000000000.0	1±15000000000000000.0	1±20000000000000000.0
1±15000000000000000.0	1±20000000000000000.0	1±30000000000000000.0
1±20000000000000000.0	1±30000000000000000.0	1±40000000000000000.0
1±30000000000000000.0	1±40000000000000000.0	1±50000000000000000.0
1±40000000000000000.0	1±50000000000000000.0	1±60000000000000000.0
1±50000000000000000.0	1±60000000000000000.0	1±80000000000000000.0
1±60000000000000000.0	1±80000000000000000.0	1±100000000000000000.0
1±80000000000000000.0	1±100000000000000000.0	1±150000000000000000.0
1±100000000000000000.0	1±150000000000000000.0	1±200000000000000000.0
1±150000000000000000.0	1±200000000000000000.0	1±300000000000000000.0
1±200000000000000000.0	1±300000000000000000.0	1±400000000000000000.0
1±300000000000000000.0	1±400000000000000000.0	1±500000000000000000.0
1±400000000000000000.0	1±500000000000000000.0	1±600000000000000000.0
1±500000000000000000.0	1±600000000000000000.0	1±800000000000000000.0
1±600000000000000000.0	1±800000000000000000.0	1±1000000000000000000.0
1±800		